

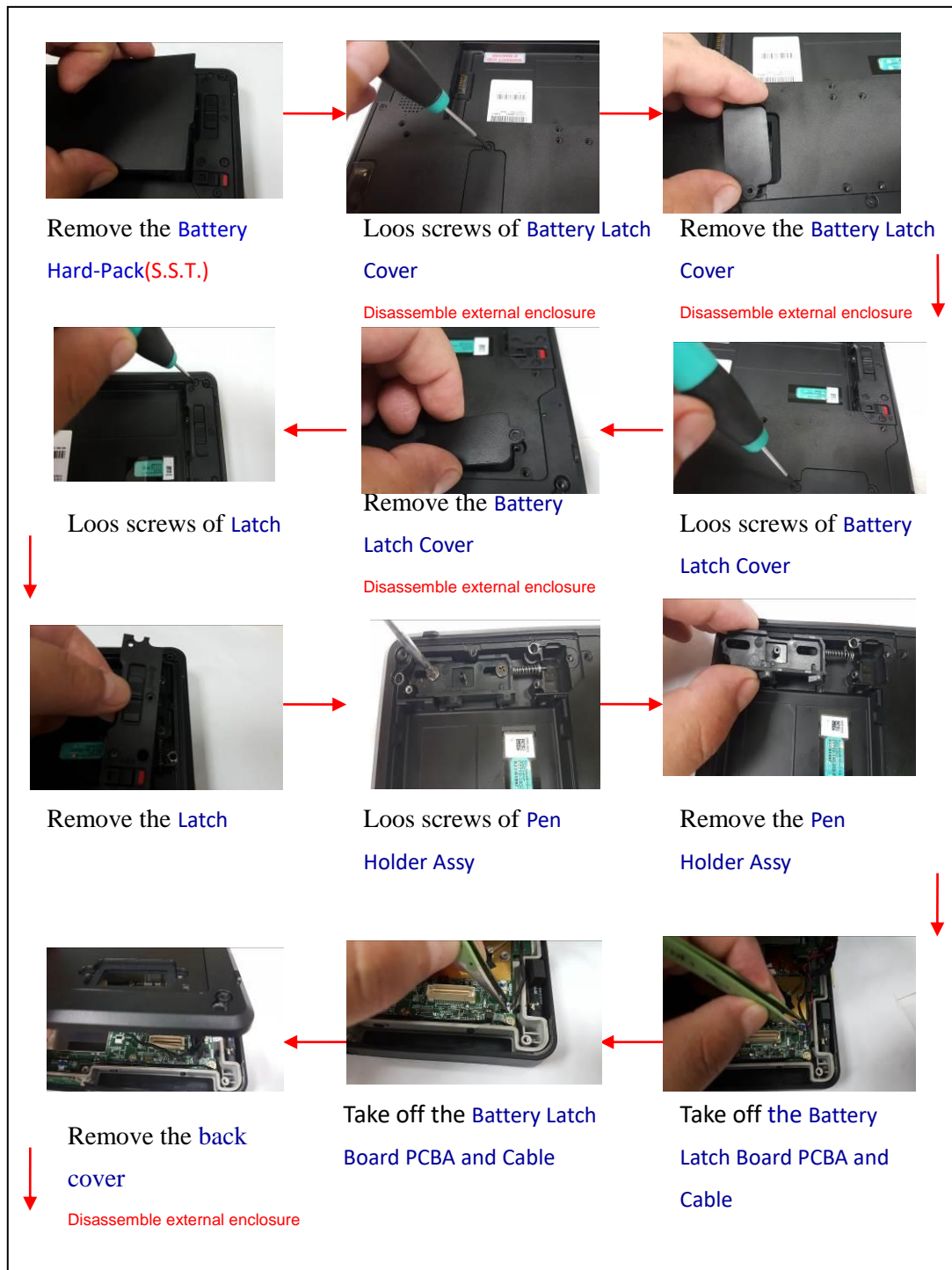


Luna3 Disassemble SOP

Prepared by : Edison Yang

Issued on : 2023/6/11

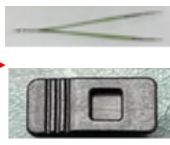
Luna3 Dissemble Process



Remark : 1: S.S.T means selective treatment from Annex VII of the WEEE Directive



Tear off **Battery Latch Board PCBA and Cable**



We use **tweezers** to tear off the **battery latch lock**.



Tear off the **Speaker**



Take off **Tear off Thermal Pad**



Take off the **PCBA Camera board _rear PCBA and Cable(S.S.T.)**



Loos screws of **PCBA Camera board _rear PCBA and Cable(S.S.T.)**



Tear off the **Button**



Take off the **Camera board _rear PCBA and Cable(S.S.T.)**



Tear off the **LVDS cable**



Tear off the **LVDS cable**



Take off the **cable**



Take off the **GPS antenna cable**



Take off the **Coin battery(S.S.T.)**

Remark: S.S.T. means selective treatment from Annex VII of the WEEE Directive



Take off the cable



Take off the cable



Tear off the PCBA
Right MIC BOARD
and Wire



Loos screws of Camera
board _front PCBA and
Wire(S.S.T.)



Tear off the Camera
board _front PCBA
and Wire(S.S.T.)



Take off the PCBA Right
MIC BOARD and Wire



Take off the Camera
board _front PCBA
and Wire(S.S.T.)



Separate the PCBA
USBC Docking
Board(S.S.T.)



Take off the PCBA
USBC Docking
Board(S.S.T.)



Remove the
antenna cable



Tear off the PCBA
Dual SIM/Sensors
Board(S.S.T.)



Separate the PCBA Dual
SIM/Sensors Board(S.S.T.)



Tear off the cable



Separate the PCBA
Mainboard(S.S.T.)by loosening
screws



Remove the PCBA
Mainboard(S.S.T.)



Remove the PCBA
Battery charge
board(S.S.T.)



Separate the PCBA
Battery charge board
(S.S.T.)by loosening



Remove the PCBA
button board(S.S.T.)



Tear off PCBA
Antenna board and
Wire(S.S.T.)



Remove the GPS
modules(S.S.T.)



Tear off the Metal
sheets



Completed
disassembly



Remove FRONT
CASE(S.S.T.)
Disassemble external enclosure



Tear off the FRONT
CASE(S.S.T.)
Disassemble external enclosure

Accessories



The external power adapter enclosure separated/removed related method. (S.S.T.)



Bracket of adaptor:



Case of adaptor:



Remark: S.S.T. means the selective treatment from Annex VII of the WEEE Directive



(S.S.T.)



(S.S.T.)



(S.S.T.)



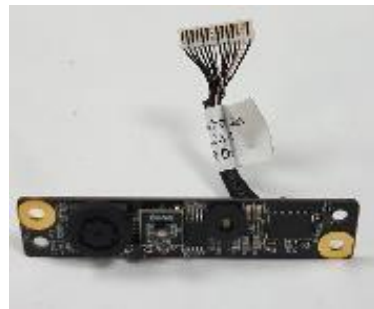
(S.S.T.)



(S.S.T.)



(S.S.T.)



(S.S.T.)



(S.S.T.)



(S.S.T.)



(S.S.T.)



(S.S.T.)



(S.S.T.)



(S.S.T.)



(S.S.T.)



(S.S.T.)

Disassemble SOP of external enclosure

We do the below SOP for the disassemble process of the external enclosure (Battery latch cover, Battery Latch Lock, CASE ASSY_B2010001_BACK CASE_TaiDoc, CASE ASSY_B2010001_FRONT CASE_TaiDoc). See the below 4 items.

1. battery latch cover

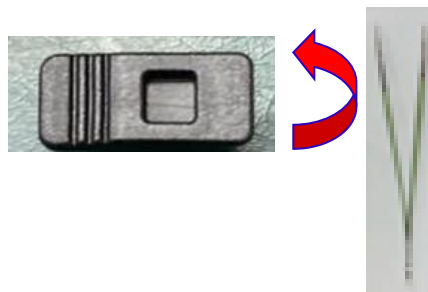
Method: We use hexalobular socket to loos screws of Battery Latch Cover and we use hand to remove the battery latch cover, it can not cause damage that would prevent reuse or refurbishment of the product.



2. Battery Latch Lock

We have used a tweezer to tear off the battery latch lock and without causing damage that would prevent reuse or refurbishment of the product.

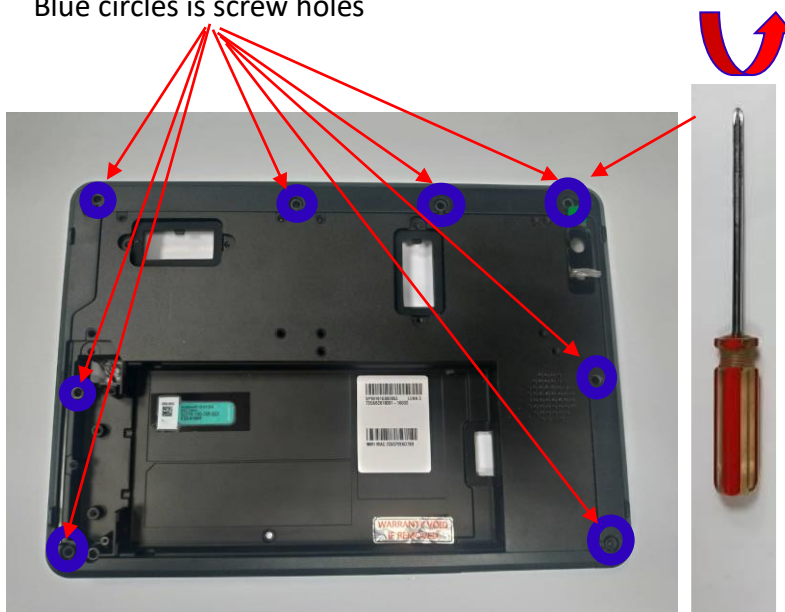
The schematic diagram is as below:



3. CASE ASSY_B2010001_BACK CASE_TaiDoc

Method: We use Hand & Philips Screwdriver to open the screw holes of Back cover. It can not cause damage that would prevent reuse or refurbishment of the product.

Blue circles is screw holes



4. CASE ASSY_B2010001_FRONT CASE_TaiDoc

We use the knife to tear off the front case and we use hand to remove the front case.

We use the knife to tear off the front case.



And then, We use a hand to remove the front case.



We can get the front case as below.



Disassembly Tools

Tools Used for
Manual
Disassembly

Philips Screwdriver
Knife
Tweezers
hexalobular socket
screwdriver
Flathead
screwdriver

