



Rugged Tablet Accessories

**RUGGON**



Detachable Keyboard  
**RDK-501**



### Key Features

- Foldable design like a laptop
- Touchpad supports multi-finger gestures
- Available in multiple language layouts
- Integrated green backlighting with 4 levels of brightness

### Specs

- IP54 rating
- Operating Temperature : -10°C ~ 50°C
- Dimensions : 280 x 210 x 10mm (11 x 8.27 x 0.4 in)
- Weight: 900g (2 lb)

### Match Products

- SOL PA501, PX501 Gen3, PX-501, PM-521

### Key Features

- Meet IPX5 and FIPS 201 PIV certification
- Accurately scan and verify biometric characteristics in seconds
- Solid mechanism design and simply plug into USB port

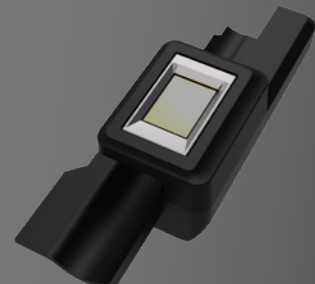
### Specs

- FIPS 201 PIV Certificate
- Capacitive type, 508 dpi
- IPX5 design
- FAP10
- Supports OS : Windows & Android
- Supports Windows Hello plug and play
- Dimensions : 108 x 49 x 28 mm (4.25 x 1.92 x 1.11 in)
- Weight: 40g (0.09 lb)

### Match Products

- SOL PA501, PX501 Gen3, PX-501, PM-521

Fingerprint Reader  
**RSK-FP02**



Fingerprint Reader +  
Magnetic Stripe Reader (MSR), 2 in1  
**RSK-FM01**



## Key Features

- Integrated fingerprint reader and MSR reader in one module
- Accurately scan and verify biometric characteristics in seconds
- Solid mechanism design and simply plug into USB port

## Specs

- IPX5 design
- Supports OS: Windows & Android
- Dimensions : 59 x 41 x 23 mm (2.32 x 1.6 x 0.9 in)
- Weight: 105g (0.23 lb)

### – Fingerprint

- FIPS 201 PIV certificate
- Capacitive type, 508 dpi
- FAP10
- Supports Windows Hello plug and play

### – MSR

- Reference Standards : ANSI/ISO Standards 7810,7811-1/6, 7813, JIS II
- Decoding Method : ISO Track1- IATA , Track2- ABA and Track3 – THRIFT
- Card Swiping Speed : Card speed through the unit may vary from 3 ips to 100 ips

## Match Products

- SOL PA501, PX501 Gen3, PX-501, PM-521

## Key Features

- Integrated fingerprint reader and MRZ reader in one module
- Solid mechanism design and simply plug into USB port

## Specs

- Supports OS: Windows & Android
- Dimensions : 59 x 41 x 23 mm (2.32 x 1.6 x 0.9 in)
- Weight: 105g (0.23 lb)

### – Fingerprint

- FIPS 201 PIV certificate
- Capacitive type, 508 dpi
- FAP10
- Supports Windows Hello plug and play

### – MRZ

- Standard OCR fonts: OCR-B
- Machine readable passports (MRP) : 2 lines of 44 characters
- Machine readable visas (MRV) : 2 lines of 44 characters, 2 lines of 36 characters
- Travel documents: 2 lines of 36 characters, 3 lines of 30 characters

## Match Products

- SOL PA501, PX501 Gen3, PX-501, PM-521

Fingerprint Reader +  
Machine Readable Zone Reader (MRZ), 2 in1  
**RSK-FM02**



Magnetic Stripe Reader (MSR)  
**RSK-FM03**



### Key Features

- Solid mechanism design and simply plug into USB port

### Specs

- Reference Standards : ANSI / ISO Standards 7810,7811-1/6, 7813, JIS II
- Decoding Method : ISO Track1- IATA, Track2- ABA and Track3- THRIFT
- Card Swiping Speed : card speed through the unit may vary from 3 ips to 100 ips
- IPX5 design
- Supports OS: Windows & Android
- Dimensions : 59 x 41 x 23 mm (2.32 x 1.6 x 0.9 in)
- Weight: 100g (0.22 lb)

### Match Products

- SOL PA501, PX501 Gen3, PX-501, PM-521

### Specs

- Reference Standards : ANSI / ISO Standards 7810,7811-1/6, 7813, JIS II
- Decoding Method : ISO Track1- IATA, Track2- ABA and Track3- THRIFT
- Card Swiping Speed : card speed through the unit may vary from 3 ips to 100 ips
- Operating Temperature : -20°C ~ 50°C
- Dimensions : 64 x 33 x 26 mm (2.5 x 1.3 x 1 in)
- Weight : 42g (0.09 lb)

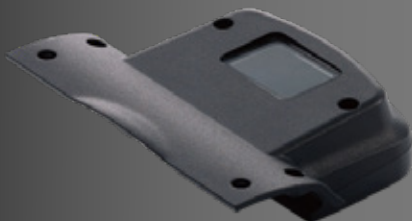
### Match Products

- PM-522

Magnetic Stripe Reader(MSR)  
**MR01**



2D Barcode Reader  
**BC01**



### Specs

- Symbology : all major 1D & 2D code types
- Scan Rate : 2D mode: 56 images/s auto adaptive
- Operating Temperature : -20°C ~ 50°C
- Dimensions : 61 x 32 x 33 mm (2.4 x 1.26 x 1.28 in)
- Weight : 60g (0.13 lb)

### Match Products

- PM-522

Machine Readable Zone Reader (MRZ),  
**RSK-FM04**



## Key Features

- Solid mechanism design and simply plug into USB port

## Specs

- Standard OCR fonts: OCR-B
- Machine readable passports (MRP) : 2 lines of 44 characters
- Machine readable visas (MRV) : 2 lines of 44 characters, 2 lines of 36 characters
- Travel documents: 2 lines of 36 characters, 3 lines of 30 characters
- IPX5 design
- Supports OS: Windows & Android
- Dimensions : 59 x 41 x 23 mm (2.32 x 1.6 x 0.9 in)
- Weight: 100g (0.22 lb)

## Match Products

- SOL PA501, PX501 Gen3, PX-501, PM-521

## Specs

- Operating Temperature : -20°C ~ 50°C
- Dimensions : 81 x 51 x 40 mm (3.2 x 2 x 1.6 in)
- Weight : 102g (0.22 lb)

### – MSR

- Reference Standards : ANSI / ISO Standards 7810, 7811-1/6, 7813, JIS II
- Decoding Method : ISO Track1- IATA , Track2- ABA and Track3- THRIFT
- Card Swiping Speed : card speed through the unit may vary from 3 ips to 100 ips

### – 2D Barcode Reader

- Symbology : all major 1D & 2D code types
- Scan Rate : 2D mode: 56 images/s auto adaptive

## Match Products

- PM-311B

Magnetic Stripe Reader (MSR)  
+ 2D Barcode Reader, 2 in1  
**SN202-MB01**



Magnetic Stripe Reader (MSR)  
+ Machine Readable Zone Reader (MRZ), 2 in1  
**SN202-MM01**



## Specs

- Operating Temperature : -20°C ~ 50°C
- Dimensions : 85 x 57 x 40 mm (3.4 x 2.2 x 1.6 in)
- Weight : 108g (0.24 lb)

### — MSR

- Reference Standards : ANSI/ISO Standards 7810, 7811-1/6, 7813, JIS II
- Decoding Method : ISO Track1- IATA , Track2- ABA and Track3- THRIFT
- Card Swiping Speed : card speed through the unit may vary from 3 ips to 100 ips

### — MRZ

- Standard OCR Fonts : OCR-B
- Machine Readable Passports (MRP) : 2 lines of 44 characters
- Machine Readable Visas (MRV) : 2 lines of 44 characters, 2 lines of 36 characters
- Travel Documents : 2 lines of 36 characters, 3 lines of 30 characters

## Match Products

- PM-311B

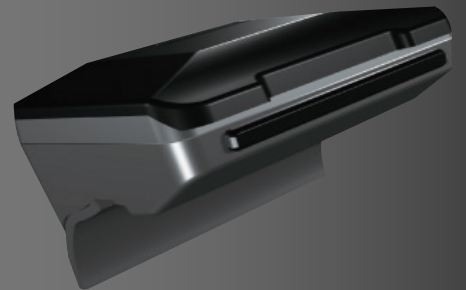
Smart Card Reader + GPS, 2 in1  
**SN201-GC01**

## Specs

- Supports ISO / IEC 7816 standard
- Supports PC Smart Card Industry Standard : PC/SC 1.0 & 2.0
- Works with 5V, 3V and 1.8V Smart Cards
- IP65, 4 feet drop with tablet
- Operating Temperature : -20°C ~ 50°C
- Dimensions : 85 x 51 x 29 mm (3.4 x 2 x 1.14 in)
- Weight : 110g (0.24 lb)

## Match Products

- PM-522



Smart Card Reader + NFC, 2 in 1  
**SN203-SN01**



### Specs

- Dimensions : 102 x 81 x 13 mm (4 x 3.2 x 0.5 in)
- Weight : 80g (0.18 lb)

#### – NFC

- Frequency : 13.56MHz
- Tag Type
  - ISO/IEC 14443A, 14443B, 15693
  - MIFARE 1K/4K, Ultralight
  - NFC-IP2 protocol

#### – Smart Card Reader

- ISO7816 Compliant
- EMV2000 (EMV 4.1) Compatible
- Support PC/SC1.0 & PC/SC2.0
- Cards
  - Atmel : AT88sc1608, AT88sc153
  - Atmel : AT24c128, AT24c256
  - ST : M14C16, M14C04
  - Siemens 2-wire link protocol : sle4432/42
  - Siemens serial 3-wire bus : sle4418/28

### Match Products

- PX501 Gen3, PX-501, PM-521

UHF RFID Reader  
**RSK-UHF01**



### Specs

- Reading Range : up to 3m (dependent on the tag and environment)
- Frequency Range
  - US : 902MHz- 928MHz
  - EU : 865MHz- 868MHz
  - JP : 916.7MHz- 920.9MHz
- RFID Protocol : EPC global Class 1 Gen2 / ISO 18000-6C
- Dimensions : 99 x 91 x 17 mm (3.9 x 3.6 x 0.65 in)
- Weight: 210g (0.46 lb)

### Match Products

- PX501 Gen3, PX-501, PM-521(Windows)

## Specs

- I/O : USB 2.0 x4, VGA, Ethernet
- Operating Temperature : -10°C ~ 50°C
- Dimensions : 196 x 150 x 87 mm (7.7 x 6 x 3.4 in)
- Weight: 1500g (3.32 lb)

## Match Products

- PM-522 (Not compatible with PM522+ EB01)

Desktop Dock  
**DT02M**



Desktop Dock  
**DT04-F**



## Specs

- I/O : USB 2.0 x4, RJ45, VGA, HDMI
- Operating Temperature: 0°C ~ 50°C
- Dimensions : 180 x 151 x 77 mm (7.1 x 5.9 x 3 in)
- Weight : 1400g (3.1 lb)

## Match Products

- PX-501, PM-521

## Specs

- I/O : USB 2.0 x4, RJ45, VGA, HDMI
- Operating Temperature: 0°C ~ 50°C
- Dimensions : 196 x 151 x 77 mm (7.7 x 5.9 x 3 in)
- Weight: 620g (1.4 lb)

## Match Products

- PM-311B

Desktop Dock  
**DT05**



Desktop Dock  
**DT06-F**



## Specs

- I/O : USB 3.0 x2, USB 2.0 x2, RJ45, VGA, HDMI
- Operating Temperature: 0°C ~ 50°C
- Dimensions : 180 x 151 x 77 mm (7.1 x 5.9 x 3 in)
- Weight : 1400g (3.1 lb)

## Match Products

- SOL PA501, PX501 Gen3

## SKU Options

SOL PA501	PX501 Gen3	PX-501	PM-521 Windows	PM-521 Android	PM-522	PM-311B	SKU	Kensington Lock	USB 3.0	USB 2.0	RJ45	HDMI	VGA	DC-in
					V		DT02M	x1	N/A	x4	x1	N/A	x1	x1
		V	V	V			DT04-F	x1	N/A	x4	x1	x1	x1	x1
						V	DT05	x1	N/A	x4	x1	x1	x1	x1
	V						DT06-F	x1	x2	x2	x1	x1	x1	x1
V					V		DT06-F	x1	N/A	x4	x1	x1	x1	x1



Vehicle Dock  
**VD200M**



Cigar cable



ACC plug



Options :

**VD200M+GP03** : with GPS module to provide GPS signal to tablet

**Specs**

- Vibration and Shock Resistance : MIL-STD-810G
- 75 mm/100 mm VESA
- Power : 9 to 32VDC
- I/O: USB 2.0 x 4, Ethernet, RS-232 x2, VGA
- Operating Temperature :-10°C ~ 55°C
- Dimensions : 248 x 229 x 97 mm (9.8 x 9 x 3.8 in)
- Weight: 1400g (3.1 lb)

**Match Products**

- PM-522 (Not compatible with PM522+ EB01)

**Key Features**

- VD04-F with rich ports support additional external devices
- Fuse for over current protection
- Easy swap fuse design
- Lock with pairing key
- Flexible antenna pass-through setting via GUI

**Specs**

- IP54 water / dust resistance
- Vibration and Shock Resistance : MIL-STD-810G
- 75 mm/100 mm VESA

– **VD04-M**

- Pure mount without I/O ports
- Dimensions : 301 x 231 x 111 mm (11.9 x 9 x 4.4 in)
- Weight : 1200g (2.7 lb)

**Match Products**

- SOL PA501, PX501 Gen3, PX-501, PM-521

– **VD04-F**

- Support Ignition
- Power : 9 to 32VDC input, 19VDC 1.57A output
- I/O : USB 2.0 x4, RF pass-through x2, RS-232 x2, RJ45, VGA, HDMI, DI x4, DO x4
- Operating Temperature:-20°C ~50°C
- Dimensions : 301 x 290 x 126 mm (11.9 x 11.4 x 5 in)
- Weight : 2080g (4.6 lb)

**Match Products**

- PX-501, PM-521

Vehicle Dock  
**VD04**



Options :

**VD04-F-A** : with ACC power cable

**VD04-F-C** : with Cigar Type DC cable



**VD04-F-A**

With ACC power cable



**VD04-F-C**

with Cigar Type DC cable

## Vehicle Dock VD05-F



### Options :

- VD04-F-A** : with ACC power cable
- VD04-F-C** : with Cigar Type DC cable



**VD04-F-A**  
With ACC power cable



**VD04-F-C**  
with Cigar Type DC cable

### Specs

- Vibration and Shock Resistance : MIL-STD-810G
- 75 mm/100 mm VESA
- Power : 9-32VDC
- I/O : USB 2.0 x4, RS-232 x2, RJ45, VGA
- Operating Temperature:-20°C ~ 50°C
- Dimensions : 124 x 115 x 52 mm (4.9 x 4.5 x 2.04 in)
- Weight : 1450g (3.2 lb)

### Match Products

- PM-311B

### Key Features

- Rich ports support additional external devices
- Fuse for over current protection
- Easy swap fuse design
- Lock with pairing key
- Flexible antenna pass-through setting via GUI

### Specs

- Support Ignition
- IP54 water / dust resistance
- Vibration and Shock Resistance : MIL-STD-810G
- 75 mm/100 mm VESA
- Power : 9 to 32VDC input, 19VDC 1.57A output
- I/O : USB 3.0 x2, USB 2.0 x2, RF pass-through x2, RS-232 x2, RJ45, VGA, HDMI, DI x4, DO x4
- Operating Temperature:-20°C ~ 50°C
- Dimensions : 301 x 290 x 126 mm (11.9 x 11.4 x 5 in)
- Weight : 2080g (4.6 lb)

### Match Products

- SOL PA501, PX501 Gen3

## Vehicle Dock VD06-F



### Options :

- VD06-F-A** : with ACC power cable
- VD06-F-C** : with Cigar Type DC cable



**VD06-F-A**  
With ACC power cable



**VD06-F-C**  
with Cigar Type DC cable

Vehicle Dock  
**VD10**



Options :

**VC02**  
Vehicle charger  
with cigarette plug



**VC03**  
Vehicle charger  
with wire cable ACC



### Key Features

- Simple one-handed installation
- Lock with pairing key
- Flexible antenna pass-through setting

### Specs

- Vibration Resistance : MIL-STD-810G
- Power : 12/24 VDC input, 19 VDC 4.74A output
- 75 mm VESA
- RS-232 supports 0V/5V/12V, @1A
- I/O : USB 2.0 x2, RS-232, RJ45, SMA antenna connector x2
- Operating Temperature :-10°C ~ 50°C
- Dimensions : 299 x 72 x 255 mm (11.8 x 2.84 x 10 in)
- Weight : 850g (1.9 lb)

### Match Products

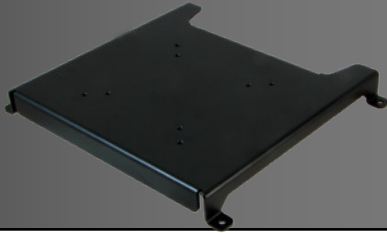
- **VD10B** - PX-501, PM-521  
(Not compatible for SN203-SN01/  
RSK-UHF01/EB03 installing on PX-501 or PM-521)
- **VD10C** - SOL PA501, PX501 Gen3  
(Not compatible with SN203-SN01/RSK-UHF01/  
EB03 installing on PX-501 or PM-521)

### SKU Options

SKU	VD200M	VD04-M	VD04-F	VD05-F	VD06-F		VD10B	VD10C
USB 3.1 Gen I	N/A	N/A	N/A	N/A	x 2	N/A	N/A	N/A
USB 2.0	x 4	N/A	x 4	x 4	x 2	x 4	X 2	X 2
RS-232	x 2	N/A	x 2	x 2	x 2	x 2	X 1	X 1
RJ45	N/A	N/A	x 1	x 1	x 1	x 1	X 1	X 1
HDMI	N/A	N/A	x 1	N/A	x 1	x 1	N/A	N/A
VGA	x 1	N/A	x 1	x 1	x 1	x 1	N/A	N/A
Audio jack	N/A	N/A	x 1	N/A	x 1	x 1	N/A	N/A
Speaker	N/A	N/A	x 1	N/A	x 1	x 1	N/A	N/A
SMA antenna connector	Option	N/A	x 2	Option	x 2	x 2	X 2	X 2
DI/DO	N/A	N/A	4xDI; 4xDO	N/A	4xDI; 4xDO	4xDI; 4xDO	N/A	N/A
DC-in	x 1	N/A	x 1	X 1	x 1	x 1	X 1	X 1

SOL PA501		V				V		V
PX501 Gen3		V			V			V
PX-501		V	V				V	
PM-521 Windows		V	V				V	
PM-521 Android		V	V				V	
PM-522	V							
PM-311B				V				

VESA Bracket  
**VB02**



### Specs

- Dimensions : 244 x 172 x 24 mm (9.6 x 6.77 x 0.93 in)
- Weight : 618g (1.36 lb)

### Match Products

- PM-522 (Not compatible with PM-522+EB01)

### Specs

- Dimensions : 189 x 136 x 6 mm (7.44 x 5.35 x 0.24 in)
- Weight : 226g (0.5 lb)

### Match Products

- PM-311B (Not compatible with PM-311B+EB02)

VESA Bracket  
**VB03**



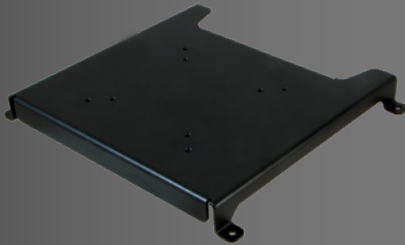
### Specs

- Dimensions : 219 x 199 x 20 mm (8.6 x 7.8 x 0.79 in)
- Weight : 730g (1.61 lb)

### Match Products

- SOL PA501, PX501 Gen3, PX-501, PM-521

VESA Bracket  
**VB04**



### Specs

- Dimensions : 219 x 199 x 20 mm (8.6 x 7.8 x 0.79 in)
- Weight : 730g (1.61 lb)

### Match Products

- SOL PA501, PX501 Gen3, PX-501, PM-521

# Power Solutions

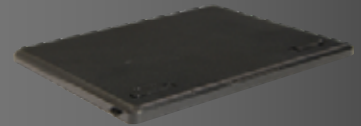
### Specs

- Extended 2nd 4400mAh battery with hook
- 7.4V, 4400mAh (32.56Wh)

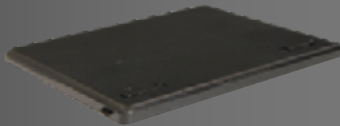
### Match Products

- PM-522

Battery  
**EB01**



Battery  
**EB02**



### Specs

- Extended 2nd 4400mAh battery with hook
- 7.4V, 4400mAh (32.56Wh)

### Match Products

- PM-311B

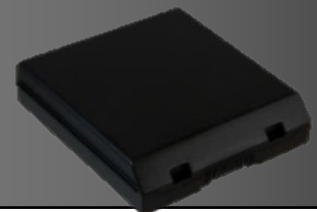
### Specs

- Extended 9000mAh battery
- 10.8V, 9000mAh (97.2Wh)

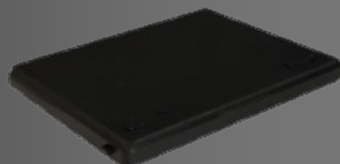
### Match Products

- SOL PA501, PX501 Gen3, PX-501, PM-521

Battery  
**EB03**



Battery  
**SB01**



### Specs

- Standard 4500mAh battery
- 10.8V, 4500mAh (48.6Wh)

### Match Products

- SOL PA501, PX501 Gen3, PX-501, PM-521

Battery Charger  
**EB100**



### Specs

- 1-bay 2nd battery charger
- Dimensions : 94 x 85 x 34 mm (3.7 x 3.4 x 1.32 in)
- Weight : 140g (0.31 lb)

### Match Products

- PM-522, PM-311B

### Specs

- 2-bay design, each bay can support both standard and extended battery
- Clear LED indicators, power and charging status
- Share the same power adapter with Tablet
- Dimensions : 154 x 106 x 80 mm (6.1 x 4.2 x 3.2 in)
- Weight : 600g (1.32 lb)

### Match Products

- SOL PA501, PX501 Gen3, PX-501, PM-521

2-Bay Battery Charger  
**EB200**



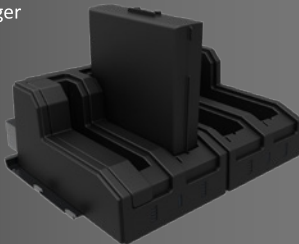
### Specs

- 4-bay design, each bay can support both standard and extended battery
- Clear LED indicators, power and charging status
- Dimensions : 214 x 207 x 83 mm (8.41 x 8.15 x 3.27 in)
- Weight:1530g (3.37 lb)

### Match Products

- SOL PA501, PX501 Gen3, PX-501, PM-521

4-Bay Battery Charger  
**RSK-BC400**



### Specs

- Vehicle charger with cigarette plug
- Input : 10-32V, 11A Max
- Output : 18.5V (18.5V), 4.9A (4.9A) 90W

### Match Products

- SOL PA501, PX501 Gen3, PX-501, PM-521, PM-522, PM-311B

Vehicle Charger  
**VC01**



Vehicle Charger  
**VC02**



### Specs

- Vehicle charger with cigarette plug
- Input : 11-16V / 22-32V
- Output : 19V, 4.73A (89.87W)

### Match Products

- SOL PA501, PX501 Gen3, PX-501, PM-521, PM-522, PM-311B

### Specs

- Vehicle charger with wire cable ACC 3 pin
- Input : 11-16V / 22-32V
- Output : 19V, 4.73A (89.87W)

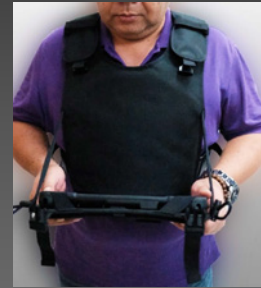
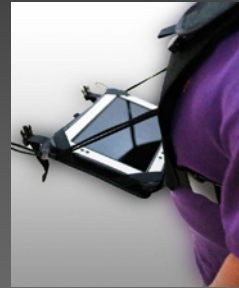
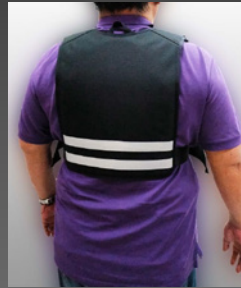
### Match Products

- SOL PA501, PX501 Gen3, PX-501, PM-521, PM-522

Vehicle Charger  
**VC03**



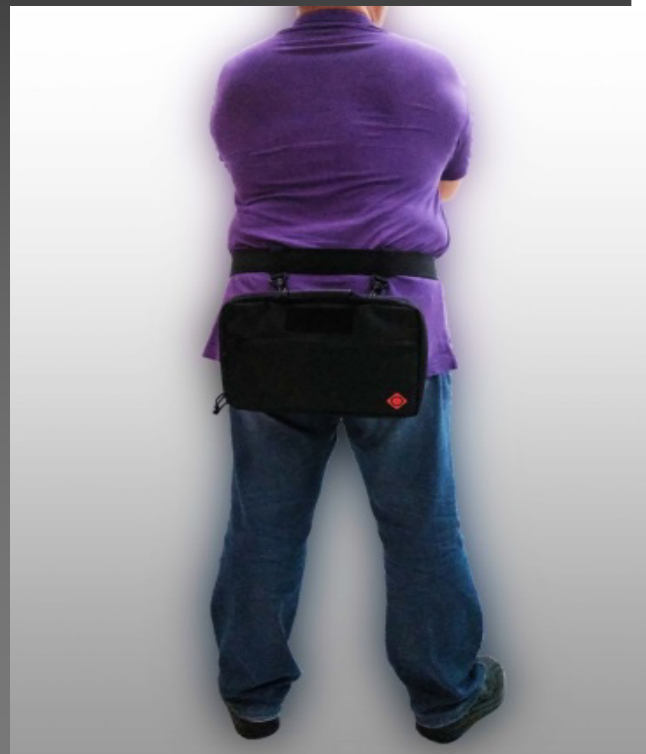
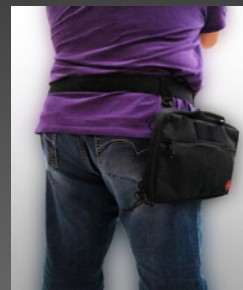
## Loading Vest



### Key Features

- Reflective stripes on back of vest
- Easily adjust the vest to support your tablet at any angle
- Replace battery without removing the tablet
- Fully adjustable for field worker of all shapes and sizes
- Provide double protection from tablet drop

## Multi-use Carry Bag



### Key Features

- Easy to change the carrying options based on different task needs
- The package includes waist belt, suspension rig, and leg fastening belt



**7" Hand Strap**

**10" Hand Strap**



**ACC Cable**

- VD04/VD06 Wire Cable ACC 3Pin 2500mm
- VD200M/VD05 Wire Cable ACC 3Pin 3000mm



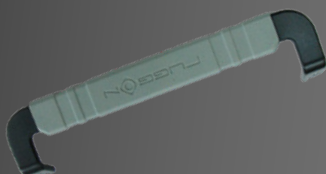
**Handle**

**Shoulder Strap**



**Cigar Cable**

- VD04/VD06 Cable Cigarette Plug 1000mm
- VD200M/VD05 Cable Cigarette Plug 3000mm



**Hard Handle RSK-HS01**

**Digitizer Pen**

- PX501C IP54 Digitizer Pen



**Anti-Glare Protection Film**



**Stylus**

- PM-522 Stylus
- PM-311B Stylus
- Rextorm Stylus



**Screws**


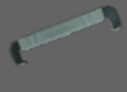


- Rextrom D-ring Screws
- PM-522 D-ring Screws

Productivity Solutions		First Responder	Public Transportation	Ports	Logistics	Automotive Diagnostic
Detachable Keyboard RDK-501		V		V	V	V
Fingerprint Reader RSK-FP02		V				
Fingerprint Reader + MSR, 2 in1 RSK-FM01		V				
Fingerprint Reader + MRZ, 2 in1 RSK-FM02		V				
Magnetic Stripe Reader RSK-FM03		V				
2D Barcode Reader BC01		V		V	V	V
Machine Readable Zone Reader RSK-FM04		V				
MSR + 2D Barcode Reader, 2 in1 SN202-MB01		V				V
MSR+ MRZ, 2 in1 SN202-MM01		V				
Smart Card Reader + GPS, 2 in1 SN201-GC01		V	V			
Smart Card Reader + NFC, 2 in 1 SN203-SN01		V	V			
UHF RFID Reader RSK-UHF01				V	V	V



Office Mounting Solutions		First Responder	Public Transportation	Ports	Logistics	Automotive Diagnostic
Desktop Dock DT02M		V	V	V	V	V
Desktop Dock DT04-F		V	V	V	V	V
Desktop Dock DT05		V	V	V	V	V
Desktop Dock DT06-F		V	V	V	V	V
Vehicle Mounting Solutions		First Responder	Public Transportation	Ports	Logistics	Automotive Diagnostic
Vehicle Dock VD200M		V	V	V	V	
Vehicle Dock VD04		V	V	V	V	
Vehicle Dock VD05-F		V	V	V	V	
Vehicle Dock VD06-F		V	V	V	V	
Vehicle Dock VD10		V	V	V	V	
Mounting Solutions		First Responder	Public Transportation	Ports	Logistics	Automotive Diagnostic
VESA Bracket VB02		V	V	V	V	
VESA Bracket VB03		V	V	V	V	
VESA Bracket VB04		V	V	V	V	

Power Solutions		First Responder	Public Transportation	Ports	Logistics	Automotive Diagnostic
Battery EB01		V		V	V	V
Battery EB02		V		V	V	V
Battery EB03		V		V	V	V
Battery SB01		V		V	V	V
Battery Charger EB100		V		V	V	V
2-Bay Battery Charger EB200		V		V	V	V
4-Bay Battery Charger RSK-BC400		V		V	V	V
Vehicle Charger VC01		V	V	V	V	
Vehicle Charger VC02		V	V	V	V	
Vehicle Charger VC03		V	V	V	V	
Other Accessories		First Responder	Public Transportation	Ports	Logistics	Automotive Diagnostic
Loading Vest		V		V	V	
Multi-use Carry Bag		V		V	V	
Shoulder Strap		V		V	V	

Other Accessories		First Responder	Public Transportation	Ports	Logistics	Automotive Diagnostic
Handle		V		V	V	V
Hard Handle RSK-HS01		V		V	V	V
7" Hand Strap		V		V	V	V
10" Hand Strap		V		V	V	V